

Capability Statement

Aerospace Precision Machine Shop

Aerobotech RTD Corporation: Proudly established in 1984, we are a Woman-Owned Small Business headquartered in Jackson, Michigan, which specializes in subtractive and additive manufacturing, reverse engineering, and assembly of precision parts for the Aerospace and Defense Industries. We deliver AS9100D compliant components with unmatched quality, tight tolerances, and on-time delivery, as evidenced by top-tier scorecards from our defense and space industry clients.

CAGE Code

14YW0

UEI

JB3MGFD68CZ3

5-Axis Mills

Core Competencies

Advanced CNC Machining
3-, 4-, and 5- Axis Milling
Dual Spindle, Dual Turret,
Live-Tooling Lathes
Prototyping to Production
Fracture-Critical Components
AI-Driven Manufacturing
Aerospace Metals Expertise
Automated Inspection with
Latest CMM and Software

Compliance & Quality

AS9100D Certified - 25-26
ITAR & DFARs Compliant - Q1 26
Women-Owned Small Business - Q4 25
CMMC Level 2 - Q2 26
Lean Six Sigma | 5S Methodologies
Continuous employee training in
advanced and AI-driven technologies

Differentiators

100% Delivery and Quality
Versatility in Scale State-of-the-
Art Technology Robotics and
Automation Artificial
Intelligence
Embracing Complexity:
Tackling designs others decline
Continuous Innovation
Challenging Projects
Trained and Skilled Team
Customer-Centric Approach
Trusted Partner

Core NAICS Codes

Aircraft & Defense:

336411
336412
336413
336414
336419

Machining & Components:

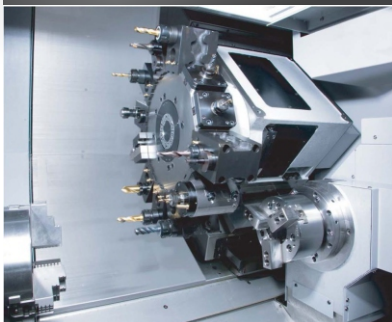
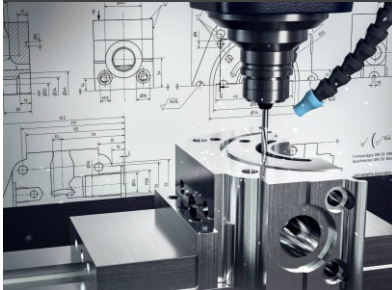
332710
332721
332772

Electronics & Systems:

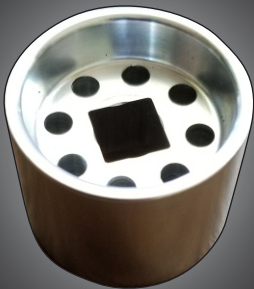
334511

Connect with Our Business Development Team

Gordon Alward | gordon.a@aerobotech.com | (760) 496-4394
Sabrina Morris | sabrina.a@aerobotech.com | (760) 755-4879
Location | 145 Monroe Street, Jackson, Michigan 49202



Live-Tooling Lathes





Capability Statement

Virgin Galactic Landing Gear

- 247 Individual Parts per Spacecraft
- Over 3,000 parts per year
- Six Spacecraft per year for the next five years
- Hard Metal and Specialty Materials
- Tolerances up to ± 0.0001 "



Spacecraft Landing Gear



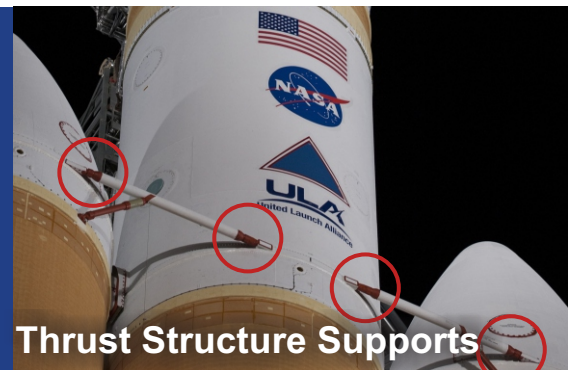
Aileron Flap Tracks

Boeing 737 MAX Aileron Flap Tracks

- Parts/Aircraft | 464/Month | 4.5 hour Run Times 465
- Stainless Steel (54 HRC)
- Fracture Critical Machining Certified
- End-to-End Blue Streak Production Management
- Manufactured Boeing Parts Since the 747

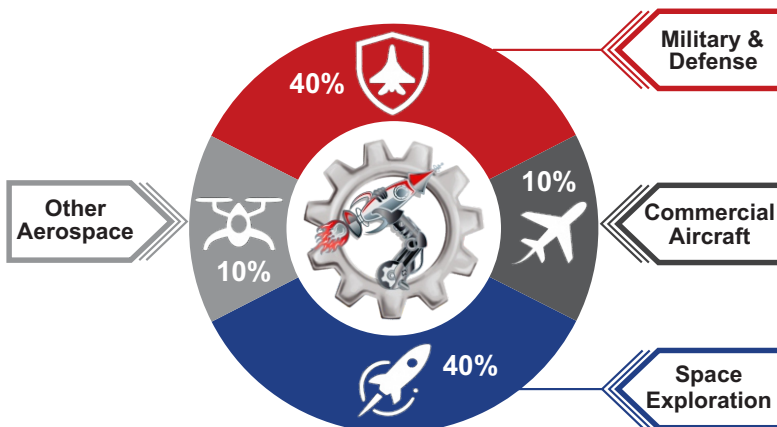
NASA/ULA Delta Heavy Rocket

- Booster Stability Criticality
- 100% Delivery and Quality
- Hundreds of Parts for Atlas and Delta Rockets
- Maintained ± 0.0001 " Post-Plating
- Worked for NASA/ULA throughout Atlas and Delta



Thrust Structure Supports

Industry Focus



Key Clients

